

TRANGO

S Y S T E M S

MODULAR TRAINING INFRASTRUCTURE

2024

MODERN DAY WARFARE

Imagine: a terrorist cell is controlling a house or an apartment. They have a hostage or hostages. The house is located in a populated area. There are other houses all around it. There are people on the streets, shops, cars...

A lot of training is required to mitigate the risks of collateral damage and to achieve the mission goals.

Now imagine that you can train combat units for this or similar missions using training aids that perfectly simulate urban environment: house or apartment floor plans, even furniture and accessories that mimic real-life settings. Add to this friends & foe models (targets) and urban-life accessories (garbage containers, trees, benches) and you get your **ultimate training set up**.



PRODUCTS CATALOGUE

A New Standard in Combat Training	4
Urban Tactical Training	5
Shoot House Training Infrastructure	6
SWAT Street Combat Training Kits	12
CQB Tactical Training Kits	14
Subterranean Warfare Training Kits	16
Structure Components Kits	18
Modular Barricades	20
Shooting Targets	21
Target Range Accessories	22
Shooting Range Targets	23
Friend & Foe Targets (models)	24
Friend & Foe Outdoor Scenes (Kits)	29
Vehicle Targets	30
Functional Vehicles	34
Household & Outdoor Furniture Kits	35
Living Room Kit	37
Kitchen Kit	38
Bedroom Kit	39
Home Office Kit	40
Bathroom Kit	41

A NEW STANDARD IN COMBAT TRAINING

Custom-built & Kit-based solutions for creating **true-to-life** training environment to simulate a wide range of combat scenarios with emphasis on **urban and subterranean warfare**.

PANEL-O-FOAM

All products are made of **PANELO™** - a patented composite manufactured exclusively for Trango Systems.

Withstands Extreme weather conditions: UV exposure, snow, extreme temperatures, and more;
Sustains >12,000 hits w/ 5.56 mm



MODULAR SOLUTIONS FOR TACTICAL COMBAT TRAINING



SHOOT HOUSE TRAINING KITS

COMPONENTS



WALL 200



WINDOW 200



DOOR PACKAGE



BEAM 200



PATCH



CORNER



J-HOOK



KLAMRA



SPIDER



BEAM 100

All kits are available in grey color or brick texture



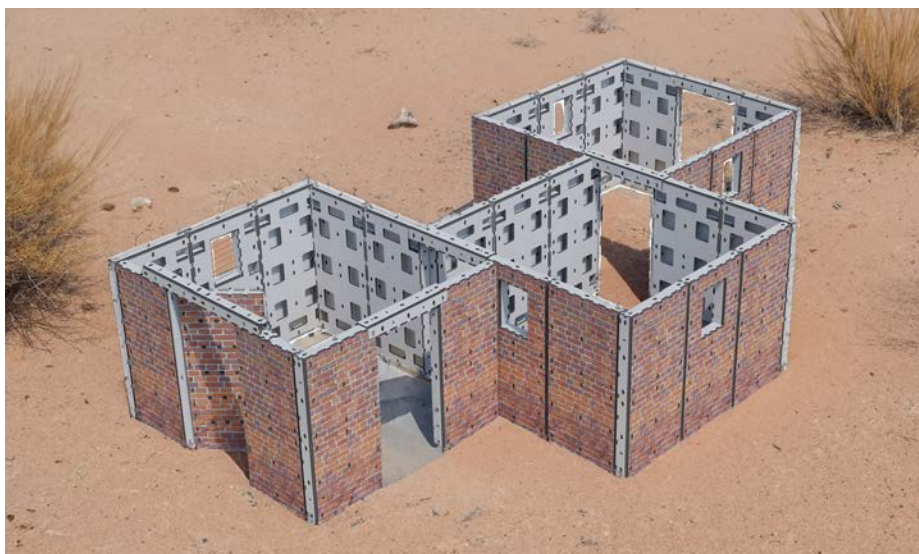
SHOOT HOUSE | BASIC



Item	Amount
Wall 200	x16
Window 200	x3
Door	x1
Beam 100	x3
Beam 200	x1
Spider	x4
Corner	x4
J-Hook	x12
Klamra	x24
Patch	x8
Window Cover	x3
C/N Gray: TS515903	
C/N Printed: TS515904	
Packages Supplied	
Package 200	x3
Door Package	x1

Floor-space:
23 m² | 247 ft²

SHOOT HOUSE | ADVANCED



Item	Amount
Wall 200	x24
Window 200	x5
Door	x1
Beam 100	x5
Beam 200	x1
Spider	x6
Corner	x6
J-Hock	x18
Klamra	x36
Patch	x12
Window Cover	x5
C/N Gray: TS515905	
C/N Printed: TS515906	
Packages Supplied	
Package 200	x5
Door Package	x1

Floor-space:
35 m² | 376 ft²

SHOOT HOUSE | EXPERT | STAND-ALONE



Item	Amount
Wall 200	x36
Window 200	x6
Door	x3
Beam 100	x6
Beam 200	x3
Spider	x9
Corner	x9
J-Hock	x27
Klamra	x54
Patch	x18
Window Cover	x6

C/N Gray: TS515920

C/N Printed: TS515921

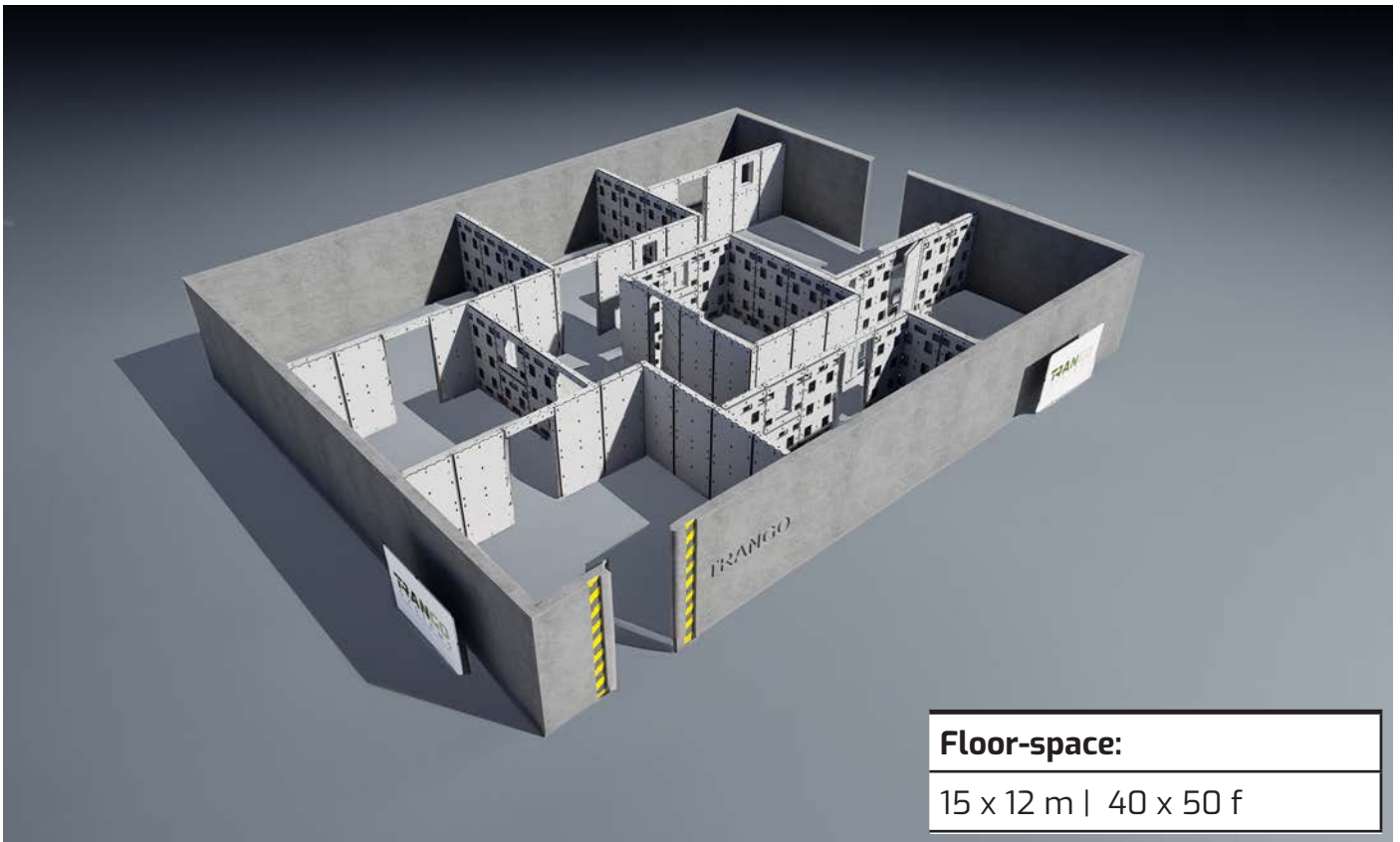
Packages Supplied

Package 200	x6
Door Package	x3

Floor-space:
51 m² | 548 ft²

SHOOT HOUSE | EXPERT | INTEGRATED

Trango's modular settings allow to integrate the structure elements into an existing frame or structure according to specific training goals and requirements, creating a larger structure from the same amount of building blocks.



SHOOT HOUSE | PRO



Item	Amount
Wall 200	x52
Window 200	x8
Door	x5
Beam 100	x8
Beam 200	x5
Spider	x13
Corner	x13
J-Hock	x39
Klamra	x78
Patch	x26
Window Cover	x8
C/N Gray: T5515922	
C/N Printed: T5515923	
Packages Supplied	
Package 200	x8
Door Package	x5

Floor-space:
73 m² | 785 ft²

SHOOT HOUSE | PRO+



Item	Amount
Wall 200	x120
Window 200	x20
Door	x10
Beam 100	x20
Beam 200	x10
Spider	x30
Corner	x30
J-Hock	x90
Klamra	x180
Patch	x60
Window Cover	x20
C/N Gray: TS515924	
C/N Printed: TS515925	

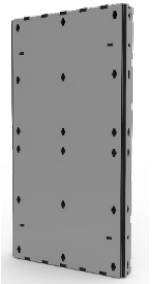
Packages Supplied

Package 200	x20
Door Package	x10

Floor-space:
170 m² | 830 ft²

SWAT STREET COMBAT TRAINING

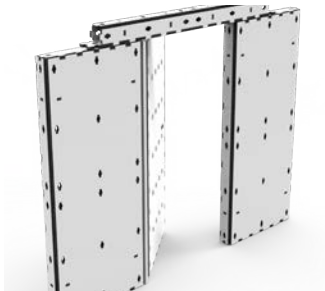
COMPONENTS



WALL 200



WINDOW 200



DOOR PACKAGE



BEAM 200



PATCH



CORNER



J-HOOK



KLAMRA

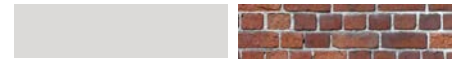


SPIDER

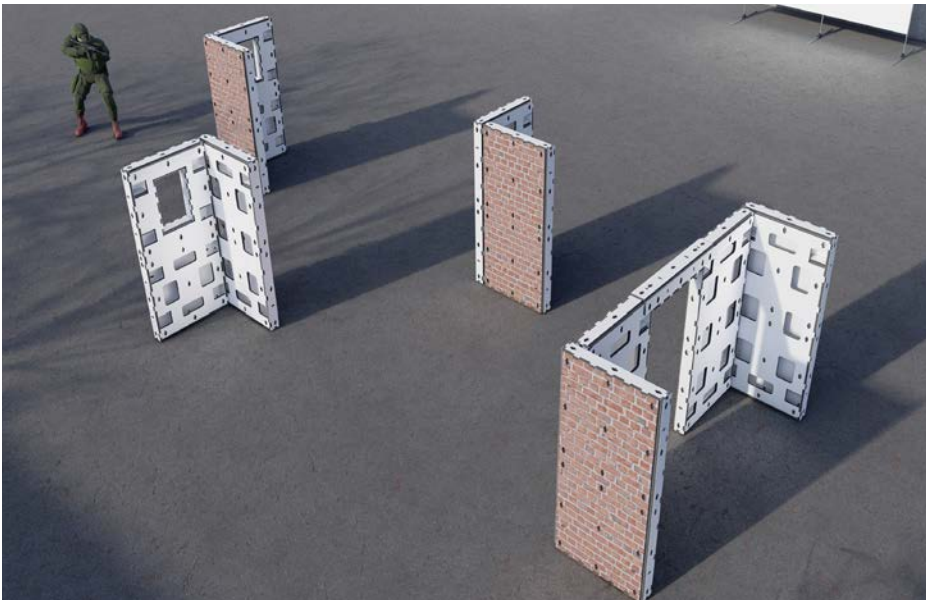


BEAM 100

All kits are available in grey color or brick texture

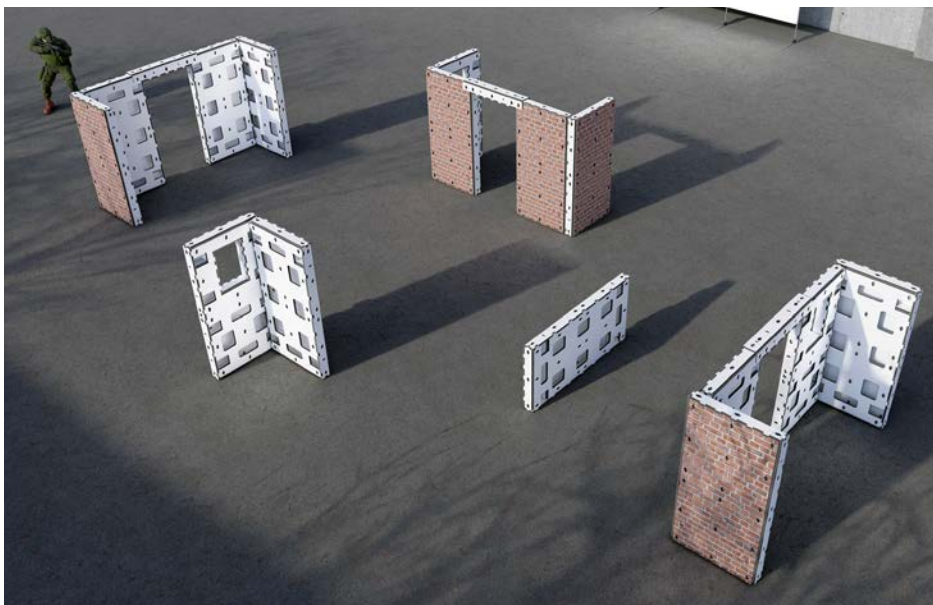


SWAT STREET COMBAT TRAINING | BASIC KIT



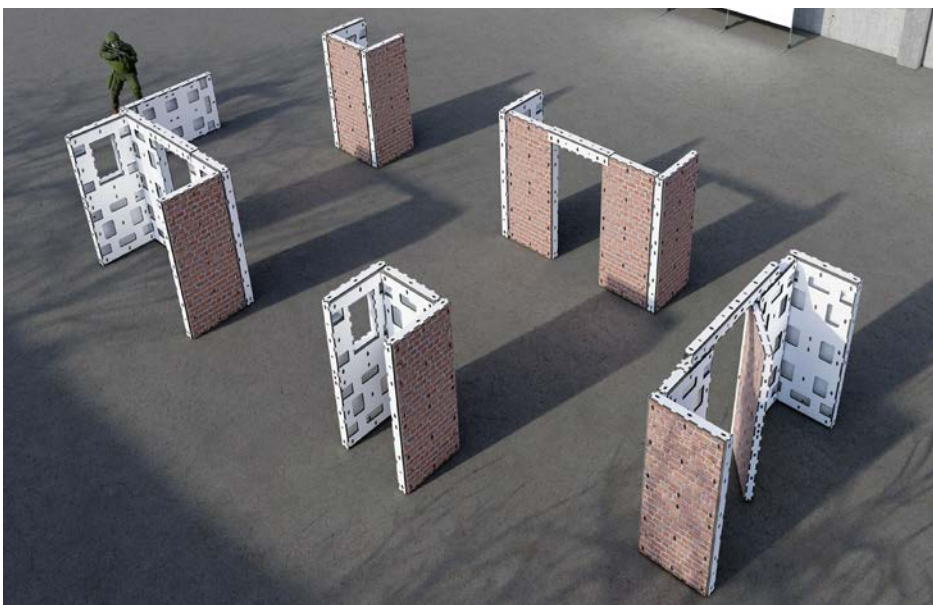
Item	Amount
Wall 200	x8
Window 200	x2
Beam 100	x2
Spider	x2
Corner	x2
J-Hook	x6
Klamra	x12
Patch	x4
Window Cover	x2
C/N Gray: TS515907	
C/N Printed: TS515908	
Packages Supplied	
Package 200	x2

SWAT STREET COMBAT TRAINING | ADVANCED KIT



Item	Amount
Wall 200	x12
Window 200	x3
Beam 100	x3
Spider	x3
Corner	x3
J-Hook	x9
Klamra	x18
Patch	x6
Window Cover	x3
C/N Gray: T5515909	
C/N Printed: T5515910	
Packages Supplied	
Package 200	x3

SWAT STREET COMBAT TRAINING | EXPERT KIT



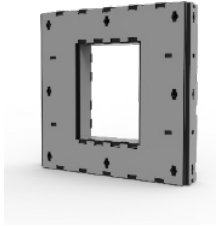
Item	Amount
Wall 200	x16
Window 200	x3
Beam 100	x3
Beam 200	x2
Door	x1
Spider	x4
Corner	x4
J-Hook	x12
Klamra	x24
Patch	x8
Window Cover	x3
C/N Gray: T5515911	
C/N Printed: T5515912	
Packages Supplied	
Package 200	x3
Door Package	x1

CQB TACTICAL TRAINING KITS

COMPONENTS



WALL 100



WINDOW 100



BARRICADE



CORNER



J-HOOK

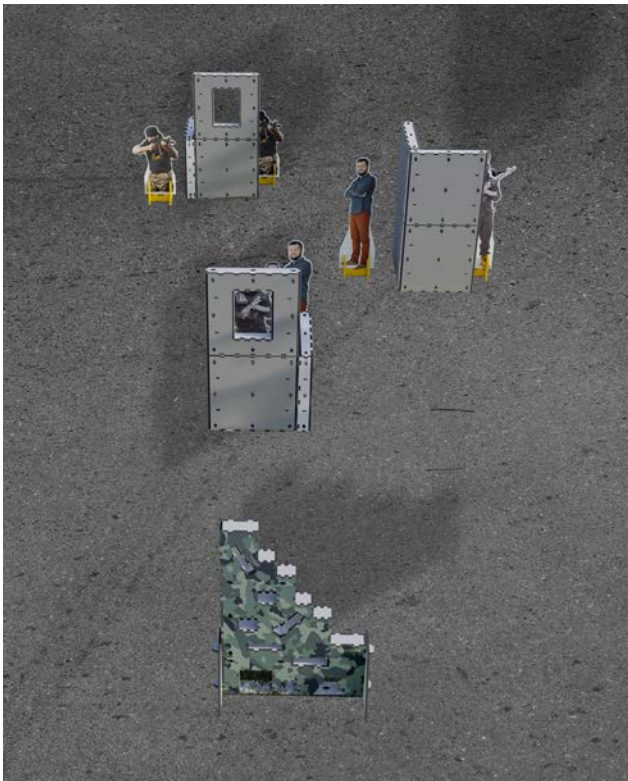


KLAMRA



SPIDER

CQB TACTICAL TRAINING | BASIC KIT



Item	Amount
Wall 100	x8
Window 100	x2
Barricade	x1
Spider	x2
Corner	x2
J-Hook	x8
Klamra	x12
C/N Gray: TS515913	
C/N Printed: TS515914	
Packages supplied:	
Package 100	x2
Barricade	x1

CQB TACTICAL TRAINING | ADVANCED KIT



Item	Amount
Wall 100	x12
Window 100	x3
Barricade	x1
Spider	x3
Corner	x3
J-Hook	x12
Klamra	x18
C/N Gray: TS515915	
C/N Printed: TS515916	
Packages supplied:	
Package 100	x3
Barricade	x1

CQB TACTICAL TRAINING | EXPERT KIT



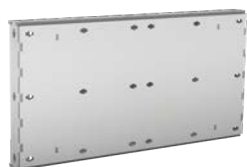
Item	Amount
Wall 100	x16
Window 100	x4
Barricade	x2
Spider	x4
Corner	x4
J-Hook	x16
Klamra	x24
C/N Gray: TS515917	
C/N Printed: TS515918	
Packages supplied:	
Package 100	x4
Barricade	x2

SUBTERRANEAN WARFARE KITS

COMPONENTS



TUNNEL WALL 200/50



TUNNEL WALL 200/100



TUNNEL WALL 100/50



TUNNEL WALL 100/100



M-COVER 100



COVER 200



F-COVER



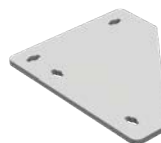
2F-COVER



BOTTOM CLAMP



TOP CLAMP



CORNER



SPIDER

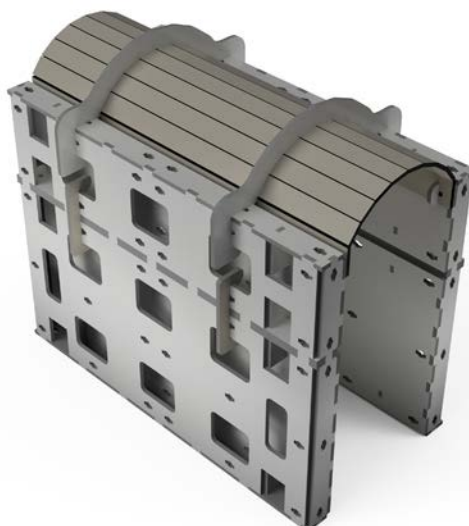


KLAMRA



BuNG

TUNNEL 200



Item	Amount
Wall 200x50	2
Wall 200x100	2
M-Cover 200	1
Corner	2
Top Clamp	2
Bottom Clamp	4
Klamra	4
Spider	2
CN: 40000022040	

TUNNEL-T



Item	Amount
Wall 100x100	3
Wall 100x50	3
M-Cover 100	1
F-Cover 100	1
Corner	2
Top Clamp	2
Bottom Clamp	4
Klamra	4
Spider	2
CN: 40000023746	

TUNNEL-L



Item	Amount
Wall 100x100	3
Wall 100x50	3
M-Cover 100	1
F-Cover 100	1
Corner	2
Top Clamp	2
Bottom Clamp	4
Klamra	4
Spider	2
Bung	1
CN: 40000022039	

TUNNEL-X

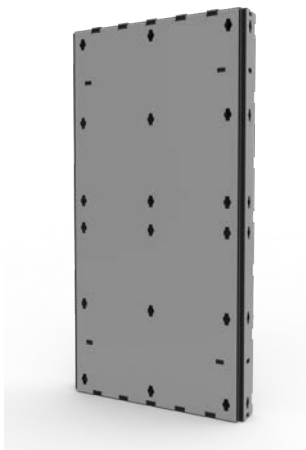


Item	Amount
Wall 100x100	4
Wall 100x50	4
M-Cover 100	2
2F-Cover 100	1
Corner	2
Top Clamp	2
Bottom Clamp	4
Klamra	4
Spider	2
CN: 40000022092	

STRUCTURE COMPONENTS KITS

DOOR PACKAGE

CN: GRAY 4000024215 | PRINTED 40000024239



WALL 200 x 4



STABILITY
PACKAGE x 1



BEAM 200 x 1



SPIDER x 1

SEPARATE COMPONENTS



SPIDER

CN: 40000023925



WINDOW COVER

CN: 40000025068



CORE (TARGET MIKI)

CN: 40000020829



BARRI-LEG

CN: 40040001040

STABILITY PACKAGE

CN: 40000024218



CORNER x1



J-HOOK x2



KLAMRA x2



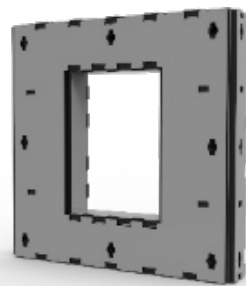
PATCH x3

PACKAGE 100

CN: GRAY 40000024216 | PRINTED 40000024237



WALL 100 x 4



WINDOW 100 x 1



STABILITY PACKAGE x 1



SPIDER x 1

PACKAGE 200

CN: GRAY 40000024214 | PRINTED 40000024238



WALL 200 x 4



WINDOW 200 x 1



STABILITY PACKAGE x 1



BEAM 100 x 1



SPIDER x 1



WINDOW COVER x1

MODULAR BARRICADES

Supplied with two Barri-Legs



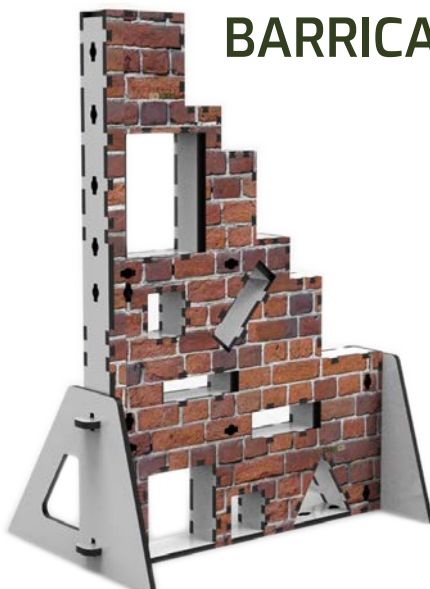
BARRICADE 1

CN: 40000023486

DIMENSIONS WxLxH	WEIGHT
120x180x15 cm 48x72x6 inch	14 kg 30 lb

Supports various weapon placements and shooting positions while engaging targets using different hole patterns.

Supplied with two legs (Barri-leg). The Barri-legs may also be ordered separately, as well (see p. 18).



BARRICADE 2

CN: 40000023867



BARRICADE 3

CN: 40000023865

SHOOTING TARGETS



TARGET RANGE ACCESSORIES

IMPORTANT!

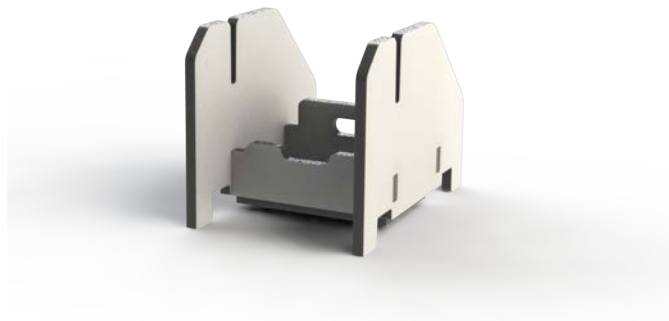
All targets and target stands are supplied in a **bundle of five**, unless indicated otherwise.

All targets are supplied without stands, unless indicated otherwise. The stands need to be ordered separately.

The above applies to both shooting range and Friend & Foe targets.

Product details are provided for one unit. Information on packages (bundles) is available in an accompanying document.

TARGET STAND



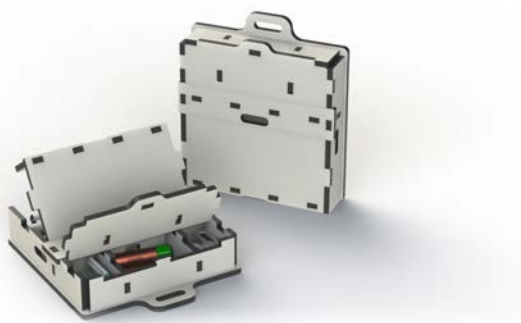
DIMENSIONS	WEIGHT
38x35x50 cm 15x13x19 inch	1.2 kg 3 lb
CN: 40020002285	

INDOORS STAND



DIMENSIONS	WEIGHT
60x120x50 cm 24x47.2x19.6 inch	2 kg 4 lb
CN: 40000021184	

SERGEANT BOX



DIMENSIONS	WEIGHT
68x60x15 cm 26x23x6 inch	2.5 kg 6 lb
CN: 40000024160	

RANGE CART



DIMENSIONS	WEIGHT
100x40x60 cm 39x15.7x23.6 inch	14 kg 30.8 lb
CN: 40000021011	

SHOOTING RANGE TARGETS

TARGET BACKER RANGE



DIMENSIONS WxH

50x129 cm
20x47 inch

WEIGHT

2.2 kg
5 lb

CN: 40010003461

TARGET BACKER MIKI



DIMENSIONS WxH

50x145 cm
20x57.1 inch

WEIGHT

2.8 kg
6 lb

CN: 40000020828

Cores needs to be ordered separately.

TARGET BACKER NICOLE



DIMENSIONS WxH

50x129 cm
20x47 inch

WEIGHT

2.2 kg
5 lb

CN: 40000021891



CORE FOR TARGET MIKI (X10)

CN: 40000020828

FIELD TARGET



DIMENSIONS WxH

50x65 cm
19.6x25.6 inch

WEIGHT

1.2 kg
3 lb

CN: 40000023591

Supplied with built-in stand

FRIEND & FOE TARGETS

All the Friend & Foe targets are provided in bundles of 5. Each bundle contains either armed or unarmed target models.

Stands need to be ordered separately.

See the attached Products Details document for information on total package dimensions and weight.

Single target's dimensions and weight:

DIMENSIONS WxH	WEIGHT
50x170/180 cm	2 kg
20x66.9/70.8 inch	4.4 lb



FRIEND & FOE | UNARMED TARGETS | KIT A



to order quote the Catalogue Number | **CN: 40000026935**

FRIEND & FOE | UNARMED TARGETS | KIT B



to order quote the Catalogue Number | **CN: 40000026936**

FRIEND & FOE | ARMED TARGETS | KIT C



to order quote the Catalogue Number | **CN: 40000026937**

FRIEND & FOE | ARMED TARGETS | KIT D



to order quote the Catalogue Number | **CN: 40000026938**

FRIEND & FOE | UNARMED TARGETS | KIT E



to order quote the Catalogue Number | **CN: 40000026939**

FRIEND & FOE | ARMED | KIT F



to order quote the Catalogue Number | **CN: 40000026940**

FRIEND & FOE | ARMED TARGETS | KIT G



to order quote the Catalogue Number | **CN: 40000026941**



FRIEND & FOE | SCENES | KIT 1



to order quote the Catalogue Number | **CN: 4000026606**

FRIEND & FOE | SCENES | KIT 2



to order quote the Catalogue Number | **CN: 4000026607**

VEHICLE TARGETS

Supplied with 2 stands

TRANGO VEHICLE TARGET | MODEL A



DIMENSIONS WxH

254.7x122.7 cm
100.3x48.3 inch

WEIGHT

8 kg
18 lb

CN: 40000023868

TRANGO VEHICLE TARGET | MODEL B



DIMENSIONS WxH

352.3x122.6 cm
138.7x48.3 inch

WEIGHT

8 kg
18 lb

CN: 40000024171

TRANGO VEHICLE TARGET | MODEL C



DIMENSIONS WxH

325.1x121.8 cm
128x47.9 inch

WEIGHT

8 kg
18 lb

CN: 40000023869

TRANGO VEHICLE TARGET | MODEL D



DIMENSIONS WxH

203x110 cm
79.9x43 inch

WEIGHT

8 kg
18 lb

CN: 40000023870

TRANGO VEHICLE TARGET | MODEL E



DIMENSIONS WxH

283.1x120.7 cm
111.4x47.5 inch

WEIGHT

8 kg
18 lb

CN: 40000019546

TRANGO VEHICLE TARGET | MODEL F



DIMENSIONS WxH

317.1x114 cm
79.9x43 inch

WEIGHT

8 kg
18 lb

CN: 40000023950

SINGLE MOTORCYCLE



DIMENSIONS WxH

340x120 cm
133.8x47 inch

WEIGHT

5 kg
11 lb

CN: 40000024151

*One board and one stand

MOTORCYCLES



DIMENSIONS WxH

1700x120 cm
669x47 inch

WEIGHT

10 kg
22.05 lb

CN: 40000023968

*Two boards and two stands



FUNCTIONAL VEHICLES



RED CAR - M1

DIMENSIONS WxLxH

470x155x160 cm
185x61x63 inch

WEIGHT

80 kg
176.4 lb

CN: 40000023734



BLUE CAR - M2

DIMENSIONS WxLxH

380x155x140 cm
150x61x55 inch

WEIGHT

45 kg
99 lb

CN: 40000021538



WHITE CAR - M3

DIMENSIONS WxLxH

470x155x160 cm
185x61x63 inch

WEIGHT

80 kg
176.4 lb

CN: 40000023728

HOUSEHOLD & OUTDOOR FURNITURE KITS



HOUSEHOLD & OUTDOOR FURNITURE AND ACCESSORIES

All household and outdoor items are arranged into kits according to standard rooms or house spaces. Each kit is packed in one box with fixed weight and dimensions, for your convenience.

Available kits:

Living Room Kit

Kitchen Kit

Bedroom Kit

Home Office Kit

Bathroom Kit

Outdoor Kit

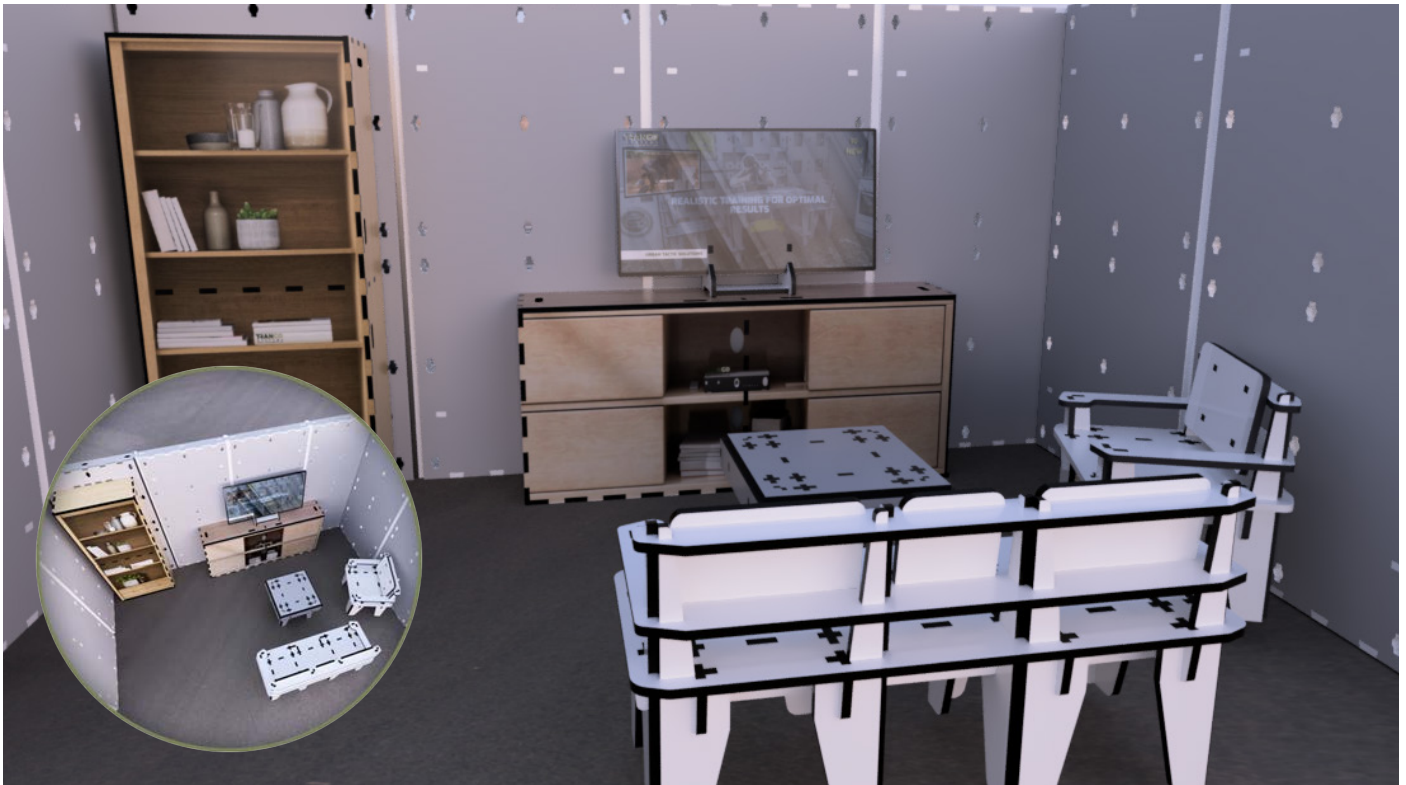
Kits' Dimensions:

2,220/1,220/12-15 cm

72.83/40.03/0.4-0.5 feet



HOUSEHOLD | LIVING ROOM KIT



to order quote the Catalogue Number | **CN: 4000025935**

Kit Components:

Bookcase 2 | x1



Dimensions:
80x35x180 cm
31x13.7x70.8 inch
Weight: 12 kg | 26 lb

TV Cabinet | x1



Dimensions:
80x35x180 cm
31x13.7x70.8 inch
Weight: 12 kg | 26 lb

Couch | x1



Dimensions:
50x50x85 cm
19.6x19.6x33 inch
Weight: 7.6 kg | 16.8 lb

Coffee Table | x1



Dimensions:
60x60x55 cm
23x23x2 inch
Weight: 3.5 kg | 7 lb

Armchair | x2



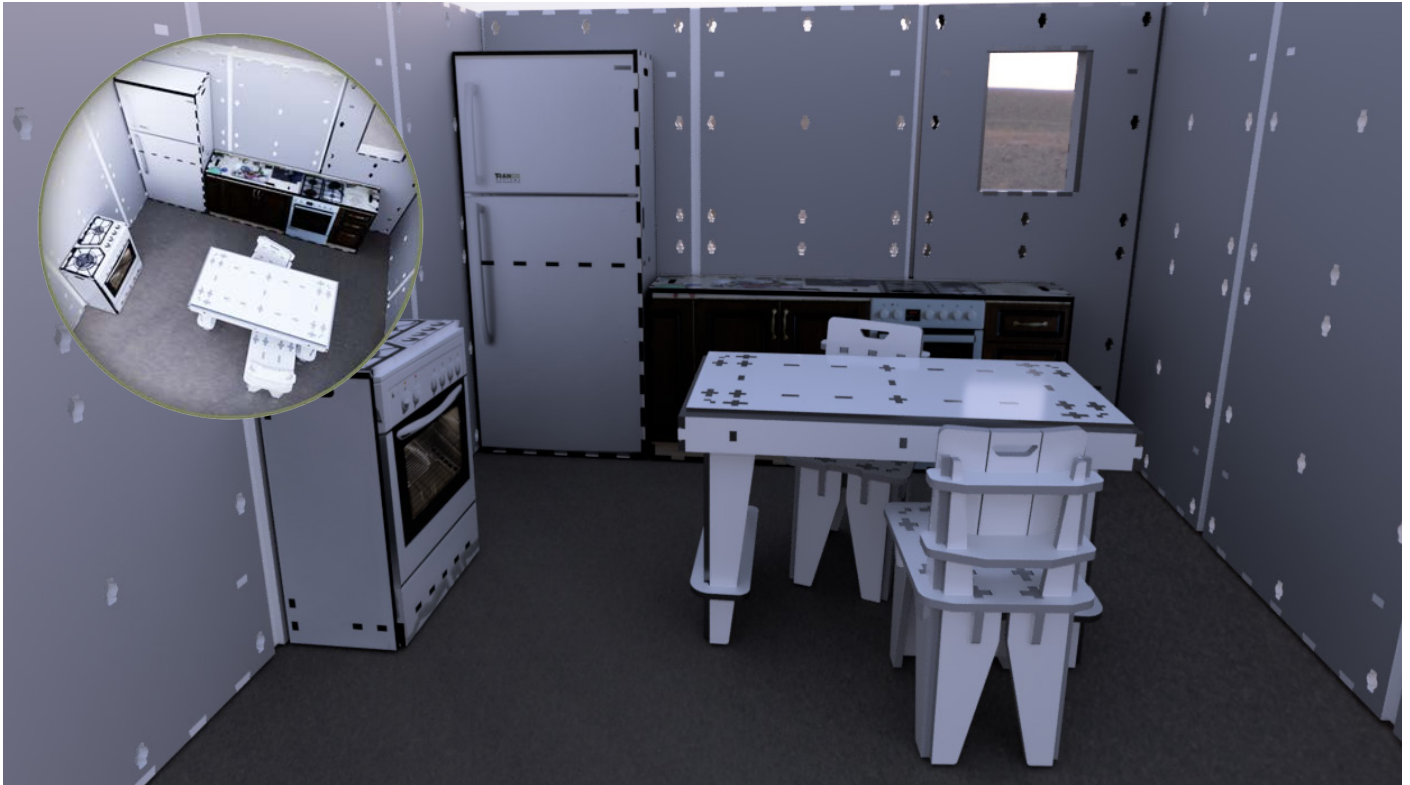
Dimensions:
55x68.3x51 cm
21.7x26.9x20.1 inch
Weight: 5.5 kg | 12 lb

TV Screen | x1



Dimensions:
60x110 cm
24x44 inch
Weight: 1.25 kg | 3 lb

HOUSEHOLD | KITCHEN KIT



to order quote the Catalogue Number | **CN: 4000025936**

Kit Components:

Large Fridge | x1



Dimensions:
80x35x180 cm
31x13.7x70.8 inch
Weight: 12 kg | 26 lb

Countertop | x1



Dimensions:
80x35x180 cm
31x13.7x70.8 inch
Weight: 12 kg | 26 lb

Oven | x1



Dimensions:
60x35x85 cm
23,6x13,7x33 inch
Weight: 5 kg | 11 lb

Large Table | x1



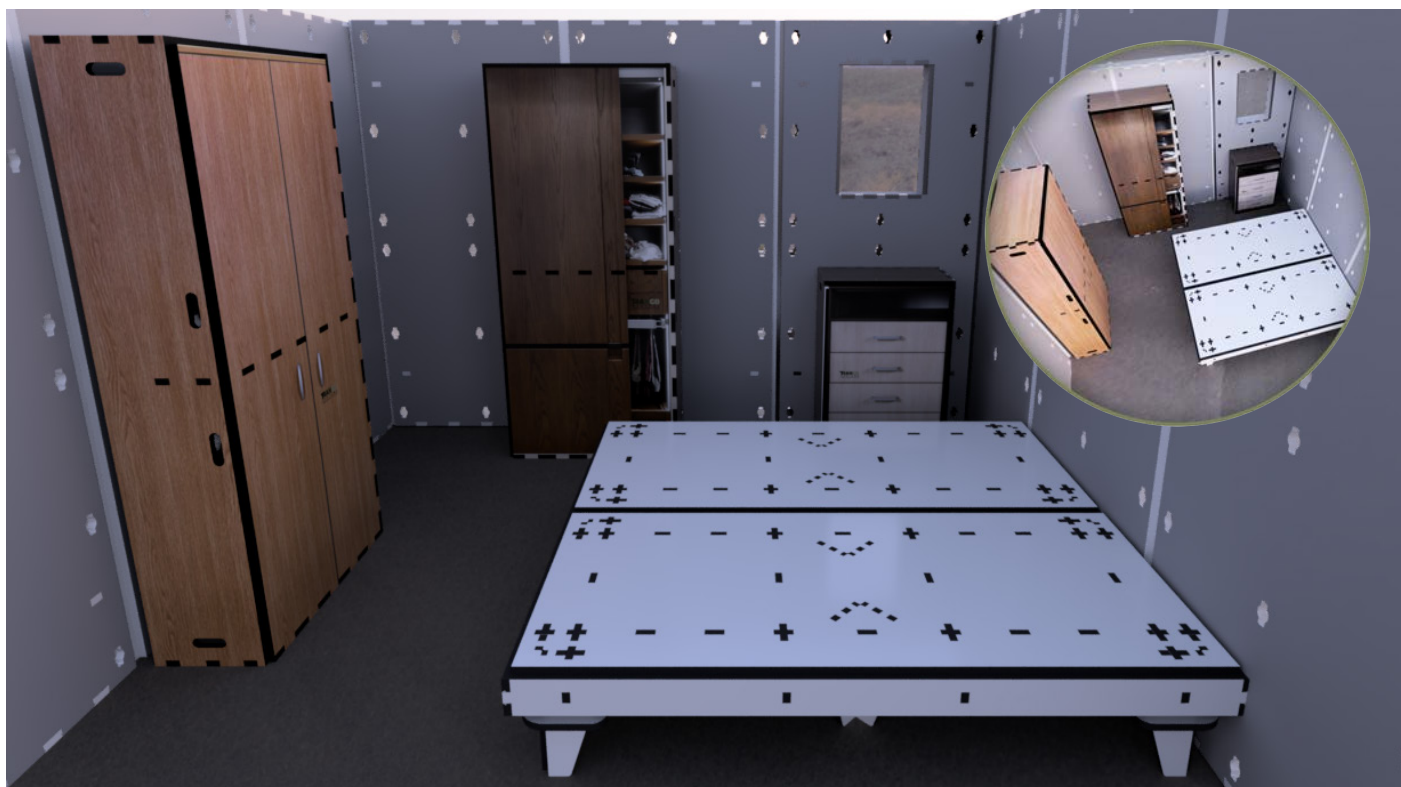
Dimensions:
120x60x57 cm
47x23x22 inch
Weight: 6 kg | 14 lb

Chairs | x2



Dimensions:
50x50x85 cm
19.6x19.6x33 inch
Weight: 4 kg | 8 lb

HOUSEHOLD | **BEDROOM KIT**



to order quote the Catalogue Number | **CN: 40000025937**

Kit Components:

Cupboard 1 | x1



Dimensions:

80x35x180 cm

31x13.7x70.8 inch

Weight: 12 kg | 26 lb

Cupboard 2 | x1



Dimensions:

80x35x180 cm

31x13.7x70.8 inch

Weight: 12 kg | 26 lb

Dresser | x1



Dimensions:

60x35x85 cm

23,6x13,7x33 inch

Weight: 5 kg | 11 lb

Single bed | x2



Dimensions:

180x80x35 cm

70x31x13 inch

Weight: 8 kg | 18 lb

HOUSEHOLD | HOME OFFICE KIT



to order quote the Catalogue Number | **CN: 4000025938**

Kit Components:

Desk | x1



Dimensions:
120x60x57 cm
47x23x22 inch
Weight: 6 kg | 14 lb

Chairs | x2



Dimensions:
50x50x85 cm
19.6x19.6x33 inch
Weight: 4 kg | 8 lb

PC Screen | x1



Dimensions:
30x40 cm
12x16 inch
Weight: 0.5 kg | 1 lb

Bookcase 1 | x1



Dimensions:
80x35x180 cm
31x13.7x70.8 inch
Weight: 12 kg | 26 lb

Bookcase 2 | x1



Dimensions:
80x35x180 cm
31x13.7x70.8 inch
Weight: 12 kg | 26 lb

Dresser | x1



Dimensions:
60x35x85 cm
23,6x13,7x33 inch
Weight: 5 kg | 11 lb

HOUSEHOLD | BATHROOM KIT



to order quote the Catalogue Number | **CN: 40000025939**

Kit Components:

Shower Cubicle | x1



Dimensions:
80x35x180 cm
31x13.7x70.8 inch
Weight: 12 kg | 26 lb

Washing Machine | x1



Dimensions:
60x35x85 cm
23,6x13,7x33 inch
Weight: 5 kg | 11 lb

Dryer | x1



Dimensions:
60x35x85 cm
23,6x13,7x33 inch
Weight: 5 kg | 11 lb

Sink | x1



Dimensions:
60x35x85 cm
23,6x13,7x33 inch
Weight: 5 kg | 11 lb

Milk Boxes | x1



Dimensions:
60x35x85 cm
23,6x13,7x33 inch
Weight: 5 kg | 11 lb

Counter | x1



Dimensions:
60x35x85 cm
23,6x13,7x33 inch
Weight: 5 kg | 11 lb

Toilet | x1



Dimensions:
35x52x49.5 cm
13.8x20.7x19.5 inch
Weight: 1.5 kg | 3.3 lb

HOUSEHOLD | OUTDOOR KIT



to order quote the Catalogue Number | **CN: 4000025940**

Kit Components:

Cable Box | x1



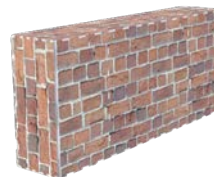
Dimensions:
60x35x85 cm
23,6x13,7x33 inch
Weight: 5 kg | 11 lb

Gas | x1



Dimensions:
60x35x85 cm
23,6x13,7x33 inch
Weight: 5 kg | 11 lb

Brick Wall | x1



Dimensions:
80x35x180 cm
31x13.7x70.8 inch
Weight: 12 kg | 26 lb

Bottles Cooler | x1



Dimensions:
80x35x180 cm
31x13.7x70.8 inch
Weight: 12 kg | 26 lb

Trash Can | x1



Dimensions:
60x60x55 cm
23x23x2 inch
Weight: 3.5 kg | 7 lb

Large Bush | x1



Dimensions:
60x60x55 cm
23x23x2 inch
Weight: 3.5 kg | 7 lb

Coffee Table | x1



Dimensions:
60x60x55 cm
23x23x2 inch
Weight: 3.5 kg | 7 lb

Stools | x2



Dimensions:
60x60x55 cm
23x23x2 inch
Weight: 3.5 kg | 7 lb



**ULTIMATE SETUP FOR TACTICAL COMBAT TRAINING
IN URBAN ENVIRONMENT
MODULAR - REALISTIC - FLEXIBLE**



TRANGO

S Y S T E M S

REALISTIC ENVIRONMENT FOR

SMART COMBAT TRAINING

Trango's mission is to provide **efficient training environment** to prepare combatants for the challenges of the real battlefield by simulating operational settings of the present-day warfare.

TRANGO: train to avoid collateral damage and achieve mission goals.

THE FOUNDERS

Hagai Mordechai | Brig. Gen. (ret.)

Division Commander, combat experience in major campaigns, Paratroopers Brigade commander, Head of IDF Tactical Commander Academy

Eitan Ben Gad | Lt. Col. (ret.)

Senior commander at Elite Combat units, COO at Paratroopers Brigade & IDF Central Command, IDF Counter-Terrorism Academy



www.trango-sys.com
info@trango-sys.com

DISCLAIMER

This document was prepared to provide information and does not constitute a contract. Trango Systems reserves the right to change, supplement, or otherwise alternate at any time the information and offerings contained in this document without prior notice. Trango Systems shall not be liable for any loss or damage, whether direct or indirect, that may arise as a result of any third party relying on the information included in this document.

For further details, information, prices, and other questions, please contact Trango Systems at info@trango-sys.com